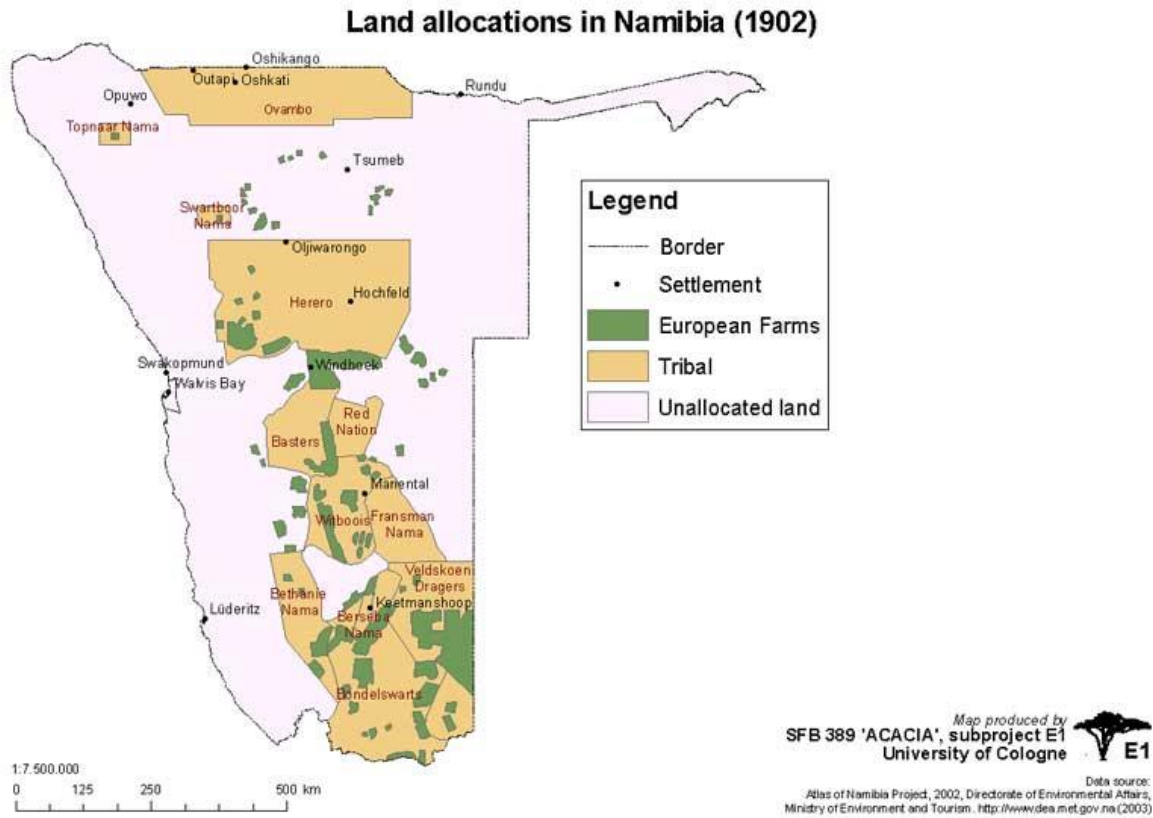
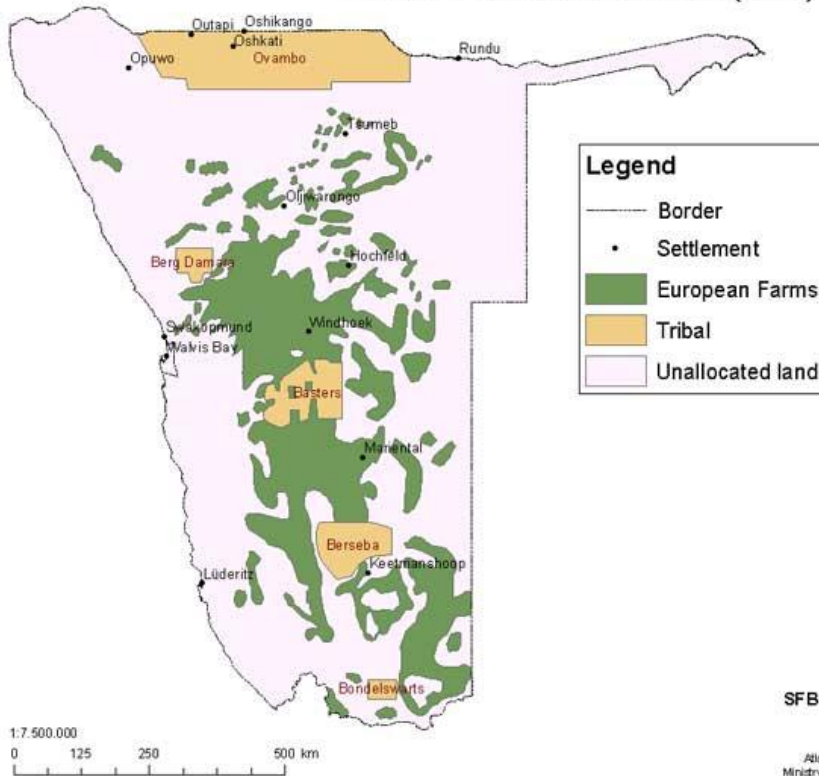



Landenteignung Karten



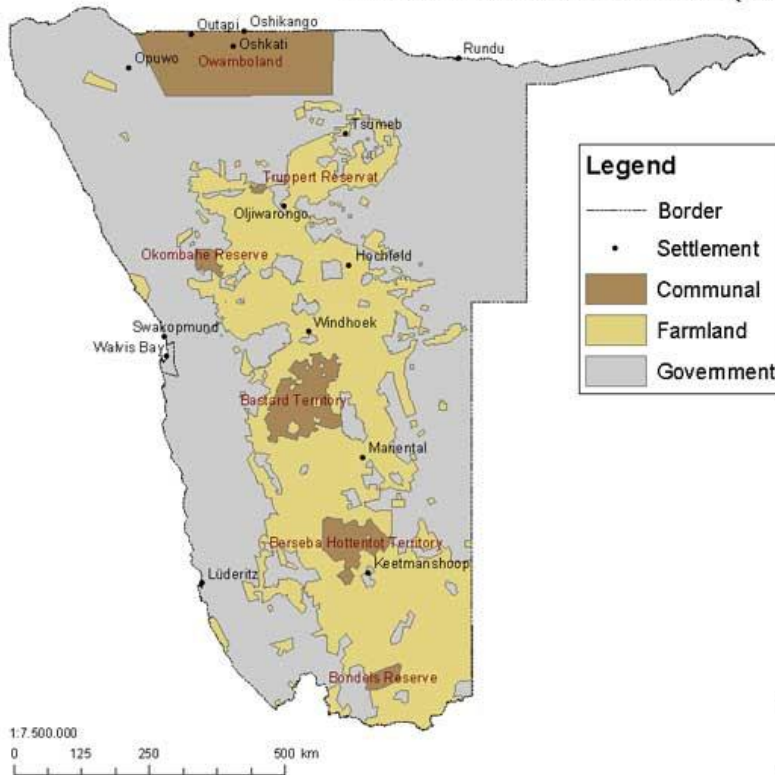
(Quelle Karten: Universität Köln bzw. Ministry of Environment and Tourism, Namibia: [Karte 1902](#), [Karte 1911](#), [Karte 1921](#))


Land allocations in Namibia (1911)



Map produced by
 SFB 389 'ACACIA', subproject E1
 University of Cologne  E1
 Data source:
 Atlas of Namibia Project, 2002, Directorate of Environmental Affairs,
 Ministry of Environment and Tourism. <http://www.dea.met.gov.na> (2003)

Land allocations in Namibia (1921)



Map produced by
 SFB 389 'ACACIA', subproject E1
 University of Cologne  E1
 Data source:
 Atlas of Namibia Project, 2002, Directorate of Environmental Affairs,
 Ministry of Environment and Tourism. <http://www.dea.met.gov.na> (2003)